

METAL

Files, Storage & Mobile Desk



Metal Lateral Files

Commercial-quality lateral files with heavy-gauge steel. Factory-built and fully assembled. MIG and TIG-welded construction with powdercoat finishes.



WH
White

SV
Silver



B - Black

5-Drawer Files feature lift-top top drawer for easier viewing of files



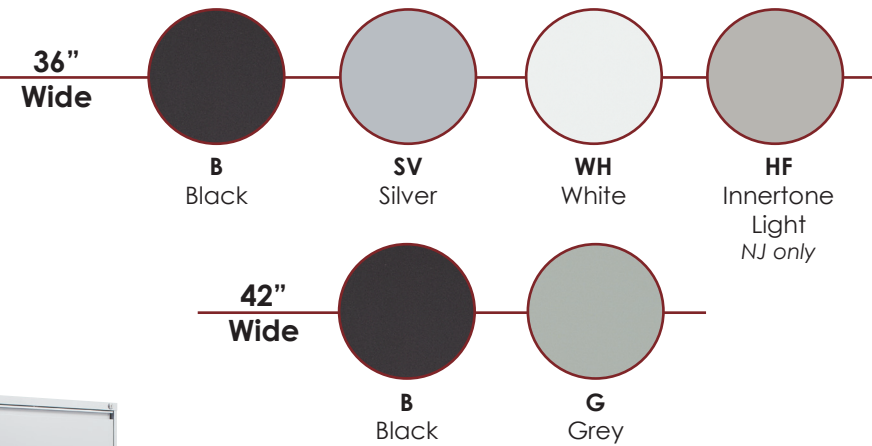
SV - Silver



W - White



SV - Silver



Key Features

- Counterweight included with all 36" & 42" wide lateral files for stability
- Anti-tilt safety mechanism standard on all drawers
- Side-to-Side Letter, Legal & A4 filing
- Front-to-back Letter & Legal filing
- 42" wide files can accommodate 3 rows of front-to-back filing with optional LF100 file bar
- Random locking with replaceable lock cores
- Full-width drawer pulls for easy access
- Long-lasting steel ball-bearing drawer slides
- Passes BIFMA testing
- Limited lifetime warranty
- Matching pedestals and storage units

Silver & White metal lateral files and pedestals are color-matched to our **Systems** *IN STOCK* workstations as well as coordinating with SPACE® Seating silver and white chairs.

36" Wide Files

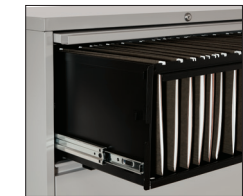
- LF236 2-Drawer Lateral File
- LF336 3-Drawer Lateral File
- LF436 4-Drawer Lateral File
- LF536 5-Drawer Lateral File

42" Wide Files

- LF242 2-Drawer Lateral File
- LF342 3-Drawer Lateral File
- LF442 4-Drawer Lateral File
- LF542 5-Drawer Lateral File

** Add LF100 Front-to-Back File Bars for (3) rows of front-to-back filing in 42"W files.

30"W lateral shown on page 4.



BIFMA-tested, steel ball-bearing drawer slides.



Standard random locking with replaceable lock cores and multiple lock numbers available.



Laminate Tops for 36" Wide Files

Shown Right in Urban Walnut:
LFT7220 72" Wide
 Top fits (2) 36" wide lateral files



Laminate Tops match our laminate casegoods and systems worksurfaces. Both 36" & 72" wide tops are available in four colors.



Shown in Urban Walnut:
LFT3620 36" Wide Top fits (1) 36" wide lateral file

Color Options



URB
 Urban Walnut



SGW
 Slate Grey



WHT
 White



ESP
 Espresso

30" Wide 2-Drawer Lateral Files

Key Features

- Counterweight included
- Anti-tilt safety mechanism standard on all drawers
- Side-to-Side Letter, Legal and A4 filing
- Random locking with replaceable lock cores
- Full-width drawer pulls for easy access
- Long-lasting steel ball-bearing drawer slides
- Passes BIFMA testing
- Limited lifetime warranty
- Matching pedestals and storage units



LF230-B Black



LF230-WH White



LF230-SV Silver



Metal Storage Cabinets

Multipurpose all-steel storage units with adjustable shelves and 270-degree opening doors with lock. Heavy-gauge steel and powdercoat finish that coordinates with metal lateral files and pedestals. Optional extra shelves. Assembly required.



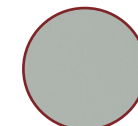
ST423618
 2-Shelf Locking Storage Cabinet
 1 adjustable shelf
 36"W x 18"D x 42"H



ST723618
 5-Shelf Locking Storage Cabinet
 4 adjustable shelves
 36"W x 18"D x 72"H



B
 Black



G
 Grey



STSHF18
 Extra Shelves
 (set of 2)

Metal Mobile Desks



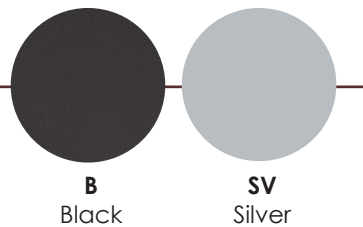
Introducing a new Mobile Desk featuring modern, mixed-materials design and built for motion. All-steel chassis includes heavy-duty metal pedestal, support bar and leg. Durable laminate tops. Versatility and functionality for all types of areas, ranging from industrial to classroom and more!

Features

- Bullet Top for collaboration and meeting
- Mobile and fixed-position use
- Easy-moving with 6 casters
- Secure in place with 4 locking casters
- Heavy-duty, factory-assembled metal pedestal with 2 box & 1 file drawer
- Letter filing front-to-back or Legal filing side-to-side
- Full-extension, ball-bearing drawer slides
- Lock with replaceable core
- Powdercoat metal finishes
- 1"-thick commercial-grade laminate
- With or without PET modesty panel
- TAA compliant



Finishes



Option	Description
LF-LK1	Lock Core + 2 Keys
LF-KM	Master Key
LF-KC	Change Key
LF-KB	Blank Key

All Metal Files, Pedestals and Storage Cabinets have achieved GREENGUARD Certification



new



Mobile Desk 48x24 with Modesty Panel
MDM48GGSS Grey/Silver | **MDM48GGBB** Grey/Black
Overall: 48W x 24D x 29H
Kneespace: 26"
Carton Wt: 102 lbs.
Cube: 11.2
Options: LF-LK1
Note: Assembly required
LTL: Yes (ships in 2 cartons)
Shown: **MDM48GGSS** Consisting of MD4824M-SV & MDPED-SV



Mobile Desk 48x24 without Modesty Panel
MD48GSS Grey/Silver | **MD48GBB** Grey/Black
Overall: 48W x 24D x 29H
Kneespace: 26"
Carton Wt: 99 lbs.
Cube: 11.2
Options: LF-LK1
Note: Assembly required
LTL: Yes (ships in 2 cartons)
Shown: **MDM48GSS** Consisting of MD4824-SV & MDPED-SV



Mobile Desk 60x24 with Modesty Panel
MDM60GGSS Grey/Silver | **MDM60GGBB** Grey/Black
Overall: 60W x 24D x 29H
Kneespace: 38"
Carton Wt: 111 lbs.
Cube: 12.2
Options: LF-LK1
Note: Assembly required
LTL: Yes (ships in 2 cartons)
Shown: **MDM60GGBB** Consisting of MD6024M-B & MDPED-B



Mobile Desk 60x24 without Modesty Panel
MD60GSS Grey/Silver | **MD60GBB** Grey/Black
Overall: 60W x 24D x 29H
Kneespace: 38"
Carton Wt: 108 lbs.
Cube: 12.2
Options: LF-LK1
Note: Assembly required
LTL: Yes (ships in 2 cartons)
Shown: **MD60GGBB** Consisting of MD6024-B & MDPED-B

Metal Vertical Files

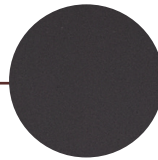
new

Arrives 2nd Quarter 2026

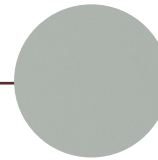


VF4DR-x
4-Drawer Vertical File
Letter width
26.5" D • Safety Interlock
15.25"W x 26.5"D x 52"H

Finishes



B
Black



G
Light Grey



VF2DR-x
2-Drawer Vertical File
Letter width
26.5" D • Safety interlock
15.25"W x 26.5"D x 28.25"H



Key Features

- Commercial grade, all-metal materials
- Factory-built and welded
- Ships fully assembled
- Letter filing front-to-back
- Full-height drawers
- Full-extension, ball-bearing drawer slides
- Anti-tilt safety mechanism on all drawers
- Removable lock cores



All Metal Files, Pedestals and Storage Cabinets
have achieved GREENGUARD Certification

Copyright © February 2026 Office Star® Products
All Rights Reserved